

Rhapsody *of the* Seas

CABIN GUIDE

Royal Suite

Separate bedroom with king-size bed, private balcony, whirlpool bathtub, living room with queen-size sofa bed and baby grand piano. (1,140 sq. ft., balcony 131 sq. ft.). Also includes refrigerator, wet bar, dining table for four, entertainment center, DVD player, VCR, stereo, CD/cassette player, private bathroom, vanity area, hair-dryer, two TVs, three phones, safe, vanity table with an extendable working surface and 110/220 electrical outlets. Sleeps up to four people and can accommodate a rollaway bed and/or Pack 'n Play.



Owner's Suite

Queen-size bed, private balcony, private bathroom with bathtub, and a separate living area with queen-size sofa bed. (523 sq. ft., balcony 116 sq. ft.). Also includes refrigerator and minibar, dining table for two, vanity area, hair-dryer, two TVs, DVD player, VCR, stereo with CD/cassette, two phones, safe, vanity table with an extendable working surface and 110/220 electrical outlets. Sleeps up to four people and can accommodate a rollaway bed and/or Pack 'n Play.



Royal Family Suite

Two bedrooms with twin beds that convert to queen-size beds, two bathrooms (one with shower, one with bathtub), walk-in closet, living area with double sofa bed and Pullman bed, and a private balcony. (463 sq. ft., balcony 55 sq. ft.). Also includes refrigerator, vanity area, hair-dryer, two TVs, two phones, safe, vanity table with an extendable working surface and 110/220 electrical outlets. Sleeps up to eight people and can accommodate a rollaway bed and/or Pack 'n Play.



Grand Suite

Two twin beds (can convert into queen-size), private balcony, sitting area with sofa bed and private bathroom with bathtub. (355 sq. ft., balcony 116 sq. ft.). Also includes refrigerator, vanity area, hair-dryer, TV, DVD player, two phones, safe, vanity table with an extendable working surface and 110/220 electrical outlets. Sleeps up to four people and can accommodate a rollaway bed and/or Pack 'n Play.



Junior Suite

Two twin beds (can convert into queen-size), private balcony, private bathroom with bathtub and a sitting area with sofa bed. (241 sq. ft., balcony 64 sq. ft.). Also includes refrigerator, vanity area, hair-dryer, TV, phone, safe, vanity table with an extendable working surface and 110/220 electrical outlets. Sleeps up to four people.



Superior Oceanview Stateroom

Two twin beds (can convert into queen-size), private balcony, sitting area with sofa bed, and a private bathroom. (195 sq. ft., balcony 41 sq. ft.). Also includes refrigerator, vanity area, hair-dryer, TV, phone, safe, vanity table with an extendable working surface and 110/220 electrical outlets.



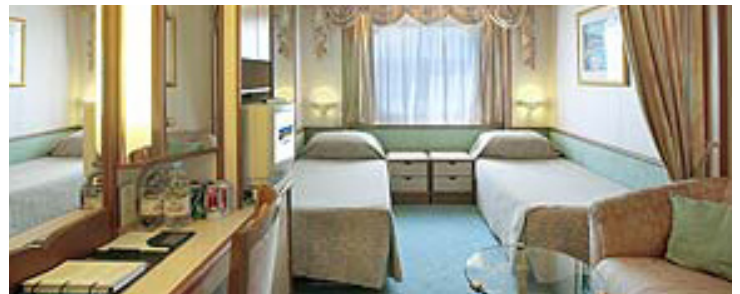
Family Oceanview Stateroom

Two twin beds (can convert into queen-size), vanity area, and a private bathroom. (174 sq. ft.). Also includes minibar, hair-dryer, TV, two phones, safe, vanity table with an extendable working surface, and 110/220 electrical outlets. Some have Pullman beds and can accommodate 3-4 guests.



Large Oceanview Stateroom

Two twin beds (can convert into queen-size), sitting area with sofa, vanity area and a private bathroom. (154 sq. ft.). Also includes minibar, hair-dryer, TV, phone, safe, vanity table with an extendable working surface, and 110/220 electrical outlets. Some have Pullman beds and can accommodate 3-4 guests.



Superior Interior Stateroom

Two twin beds (can convert into queen-size), vanity area, and a private bathroom. (174 sq. ft.) Also includes minibar, hair-dryer, TV, two phones, safe, vanity table with an extendable working surface, and 110/220 electrical outlets. Some have Pullman beds and can accommodate 3-4 guests.



Large Interior Stateroom

Two twin beds (can convert into queen-size), vanity area and a private bathroom. (151 sq. ft.) Also includes hair-dryer, TV, phone, safe, vanity table with an extendable working surface and 110/220 electrical outlets.



Interior Stateroom

Two twin beds (can convert into queen-size), vanity area, and a private bathroom. (135-144 sq. ft.) Also includes minibar, hair-dryer, TV, phone, safe, vanity table with an extendable working surface, and 110/220 electrical outlets. Some have Pullman beds and can accommodate 3-4 guests.

